

QUICK START GUIDE

DMI SYSTEM

Step 1

WARNING

BEFORE PROCEEDING WITH THE INSTALLATION, READ THE SAFETY INFORMATION AND INSTRUCTIONS IN YOUR DMI OPERATING MANUAL



Verify that the voltage specifications indicated on wall plug-in power supply/battery charger provided with your DMI, comply with the AC voltage and frequency delivered at the power outlet.

Connect your fiber optic signal conditioner DMI to the power supply.

Step 2



Using the RS-232 cable, link one of the available RS-232 ports of your computer to the FISO conditioner. Note that this same procedure is valid for DMI rack-mount edition, as illustrated.

Step 3



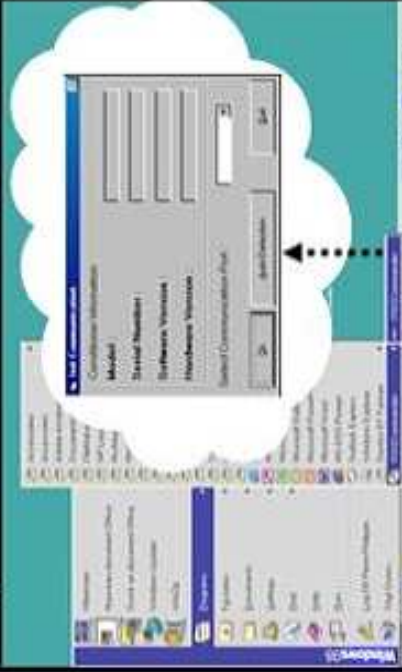
Connect the transceivers to the input connectors of your DMI conditioner.

Step 4



Install the FISOCommander® software.

Step 5



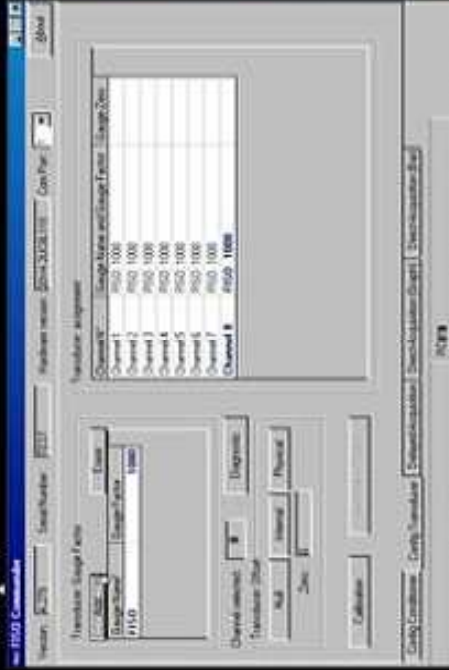
From Windows 2000/XP®, run the software by scrolling in the program files. To establish the communication between your computer and the conditioner, click on *Auto-Detection*.

Step 6



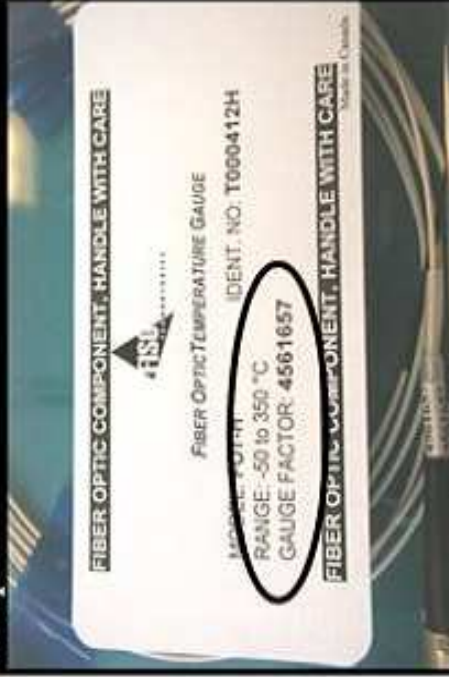
For security purpose the software will launch only if there is a serial link between the computer and the conditioner. If you have a communication problem, double check the connections and make sure to use the provided RS-232 cable.

Step 7



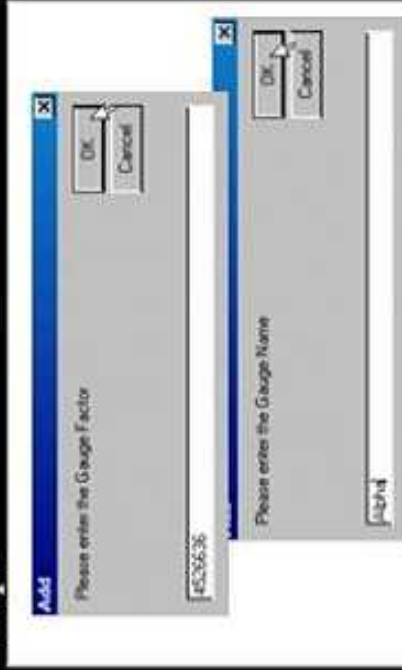
In the *Config Transducer* tab, click *Add* to store the *gauge Factory* of your transducers.

Step 8



The *gauge Factory* is written on each transducer's connector and on its clear plastic box.

Step 9



Enter the transducer's *gauge Factory*. For easier gauge management, enter a *gauge name* for every *gauge Factory* stored.

Step 10



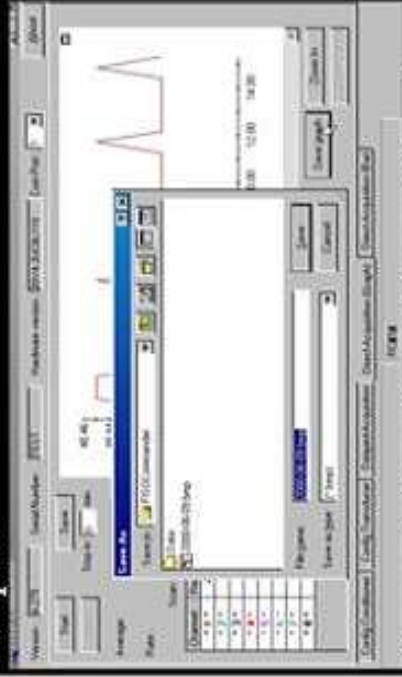
Use the drop-down list to assign a *gauge Name (gauge Factory)* to each of the channels. Select *OFF* in the drop-down list for unused channels.

Step 11



Go to the *Direct Acquisition (Graph)*, click *Start* to begin the acquisition, and click *Stop* to end the acquisition process.

Step 12



To save graph of the acquisition, click *Save graph*. To save the data click *Save*. Saved graph can be seen with a basic image viewer. Data files can be open using EXCEL or LOTUS 1-2-3.

For any questions, please contact your local representative or FISO Technologies' technical support.
 Em ail: support@fiso.com Tel: + 418-688-8065 Fax: + 418-688-8067